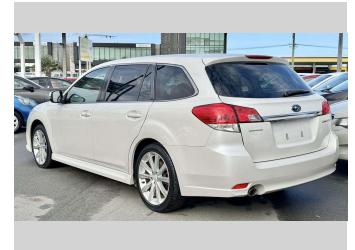
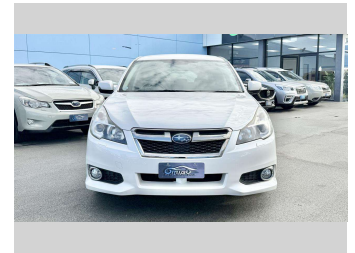
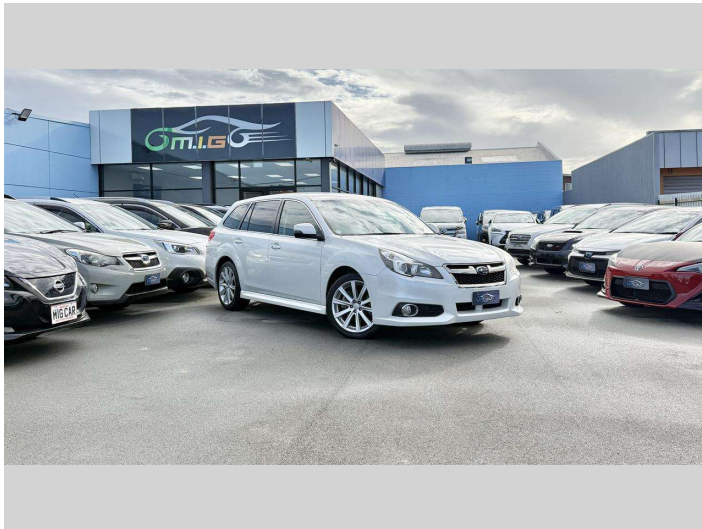


2012 Subaru Legacy Wagon 2.5L AWD




Purchase Price **\$12,950**

Includes GST
Excludes on-road costs of \$550

Indicative repayments

\$88.17 per week*

Based on a 48 month term & no deposit.
Total repayments (208) = **\$18,339.99**



Gain peace of mind with
Mechanical Breakdown Insurance. Ask us how.



Top features

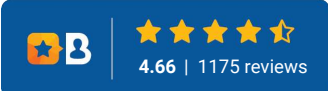
- » Adaptive cruise contro...
- » Air Conditioning
- » CD Player
- » Central Locking
- » Child seat anchor poin...
- » Climate Control
- » Electric Mirrors (Retr...
- » Heated Seats
- » Power Driver Seat
- » Rear Wiper
- » Smart Key
- » Spoiler
- » VINZ Appraised

Body Style	5 door, Station Wagon	Reg No.	-
Odometer	85,984 km	Ext Colour	White
Engine	2500 cc, Camchain	History	-
Fuel Type	Petrol	Seats	5 seats, Leather
Transmission	Automatic	CO2 Emissions	-
Wheels	Alloy	Energy Economy	-
VIN	-		
Interior	Black		
Safety	-		

Stock ID: 6290



MIG Cars - Sydenham | Phone 021 507 578 | Email sales@migcars.co.nz
63 Moorhouse Avenue, Addington, Christchurch 8011, New Zealand
www.migcars.co.nz



* MIG Cars - Sydenham is not a lender nor a financial adviser. Any amounts displayed should not be seen as an offer of finance or taken as financial advice. The interest rate, fees and loan term used in this calculation may not actually represent those available from lenders. Actual interest rates, fees and loan terms will vary per lender and are typically based on an assessment of your credit risk and responsible lending criteria. Any repayment amounts displayed are indicative only and have been calculated using several other indicative inputs. The interest rate used in this calculation is an arbitrary 13.95%, however exact interest rates vary per lender. The term of the loan used in this calculation is 48 month. Exact terms available vary per lender although options typically include 6, 12, 18, 24, 36, 48 and 60 months. This calculation also includes a typical mandatory fee charged by lenders. This is a one-off establishment fee of \$495.00. Typically, this fee can be paid upfront or, as in this calculation, be capitalised over the contract term, ie. included in the loan amount. This fee can vary per lender and other non-mandatory fees and charges may also apply. The total amount of repayments has been calculated by multiplying 208 weekly repayments (based on a 48 month term) by the weekly repayment amount of \$88.17 which equals \$18,339.99. This calculator does not consider any of your own personal circumstances and we strongly suggest you seek budgeting advice prior to committing to any loan contract. Responsible lending criteria and lender terms and conditions will likely apply to any finalised loan contract. Proof of security and/or vehicle insurance may also be required before proceeding.