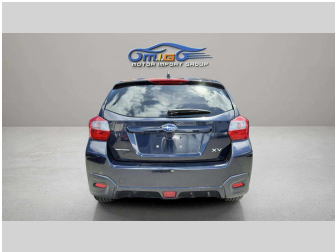
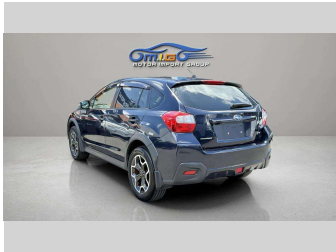
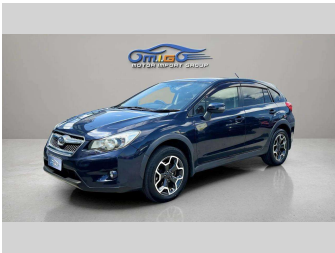
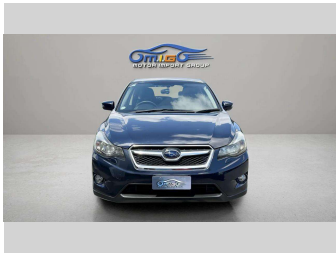


2015 Subaru XV 2.0i-l AWD 3YearWarrantyFree



Purchase Price

\$15,950

Includes GST

Excludes on-road costs of \$550

Indicative repayments

\$107.07

per week*

Based on a 48 month term & no deposit.


Total repayments (208) = \$22,271.39

finance

NOW

Money your way

Gain peace of mind with Mechanical Breakdown Insurance. Ask us how.



ASSURANT®

Top features

» Adaptive cruise contro...

» Rear Wiper

» Air Conditioning

» Reverse Camera

» CD Player

» Smart Key

» Central Locking

» VINZ Appraised

» Child seat anchor poin...

» Climate Control

» Electric Mirrors (Retr...

» Heated Seats

» Power Driver Seat

Body Style

5 door, SUV / 4x4

Odometer

88,000 km

Engine

2000 cc, Camchain

Fuel Type

Petrol

Transmission

Automatic, All Wheel Drive

Wheels

Alloy


VIN

7AT0GF09X25090106

Interior

Black

Safety



Based on 2024 UCSR rating for 12-16 models

Reg No.

-

Ext Colour

DARKBLUE

History

-

Seats

5 seats, Leather

CO2 Emissions

-

Energy Economy

☆☆☆☆☆☆


Annual fuel cost not available

Energy Consumption unknown.

Stock ID: 5933



MIG Cars - Sydenham | Phone 021 507 578 | Email sales@migcars.co.nz
63 Moorhouse Avenue, Addington, Christchurch 8011, New Zealand
www.migcars.co.nz



★★★★★

4.67 | 1111 reviews

* MIG Cars - Sydenham is not a lender nor a financial adviser. Any amounts displayed should not be seen as an offer of finance or taken as financial advice. The interest rate, fees and loan term used in this calculation may not actually represent those available from lenders. Actual interest rates, fees and loan terms will vary per lender and are typically based on an assessment of your credit risk and responsible lending criteria. Any repayment amounts displayed are indicative only and have been calculated using several other indicative inputs. The interest rate used in this calculation is an arbitrary 13.95%, however exact interest rates vary per lender. The term of the loan used in this calculation is 48 month. Exact terms available vary per lender although options typically include 6, 12, 18, 24, 36, 48 and 60 months. This calculation also includes a typical mandatory fee charged by lenders. This is a one-off establishment fee of \$495.00. Typically, this fee can be paid upfront or, as in this calculation, be capitalised over the contract term, ie. included in the loan amount. This fee can vary per lender and other non-mandatory fees and charges may also apply. The total amount of repayments has been calculated by multiplying 208 weekly repayments (based on a 48 month term) by the weekly repayment amount of \$107.07 which equals \$22,271.39. This calculator does not consider any of your own personal circumstances and we strongly suggest you seek budgeting advice prior to committing to any loan contract. Responsible lending criteria and lender terms and conditions will likely apply to any finalised loan contract. Proof of security and/or vehicle insurance may also be required before proceeding.

Vehicle data updated 08 January 2026 11:56