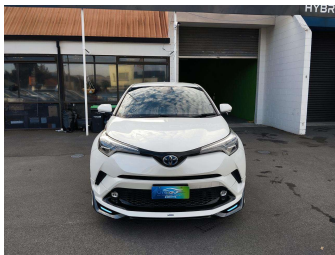


2018 Toyota C-HR 1.8S Bodykit Hybrid



Purchase Price

Includes GST
Excludes on-road costs of \$350

\$26,950

Indicative repayments

\$171.92 per week*

Based on a 48 month term & no deposit.
Total repayments (208) = \$35,759.07

finance

NOW

Gain peace of mind with
Mechanical Breakdown
Insurance. **Ask us how.**

Protecta

INSURANCE

an ASSURANT company

Top features

» Adaptive cruise contro...

» Rear Wiper

» Air Conditioning

» Reverse Camera

» Body Kit

» Smart Key

» CD Player

» Spoiler

» Central Locking

» VINZ Appraised

» Child seat anchor poin...

» Climate Control

» Electric Mirrors (Retr...

» Fog Lights

Body Style

5 door, SUV

Odometer

123,106 km

Engine

1800 cc, Hybrid

Fuel Type

Hybrid

Transmission

Automatic, Front Wheel

Wheels

Alloy

VIN

-

Interior

Black

Safety

5 star
safety rating

Based on 2023 UCSR rating
for 16-21 models

Reg No.

-

Ext Colour

Pearl White

History

-

Seats

5 seats, Cloth

CO2 Emissions

★★★★☆

99 grams/km

Energy Economy

★★★★☆☆

Annual fuel cost of \$1,650
4.2L per 100km

Cost per year is an estimate based
on petrol price of \$2.80 per litre and
an average distance of 14000 km.
Emissions and Energy Economy
figures standardised to 3P WLTP.

Stock ID: 4819



MIG Cars - Lincoln Rd | Phone 021 507 578 | Email ev@migcars.co.nz
313 Lincoln Road, Addington, Christchurch 8024, New Zealand
www.migcars.co.nz

★★★★★

4.67 | 284 reviews

* MIG Cars - Lincoln Rd is not a lender nor a financial adviser. Any amounts displayed should not be seen as an offer of finance or taken as financial advice. The interest rate, fees and loan term used in this calculation may not actually represent those available from lenders. Actual interest rates, fees and loan terms will vary per lender and are typically based on an assessment of your credit risk and responsible lending criteria. Any repayment amounts displayed are indicative only and have been calculated using several other indicative inputs. The interest rate used in this calculation is an arbitrary 12.95%, however exact interest rates vary per lender. The term of the loan used in this calculation is 48 month. Exact terms available per lender although options typically include 6, 12, 18, 24, 36, 48 and 60 months. This calculation also includes a typical mandatory fee charged by lenders. This is a one-off establishment fee of \$495.00. Typically, this fee can be paid upfront or, as in this calculation, be capitalised over the contract term, ie. included in the loan amount. This fee can vary per lender and other non-mandatory fees and charges may also apply. The total amount of repayments has been calculated by multiplying 208 weekly repayments (based on a 48 month term) by the weekly repayment amount of \$171.92 which equals \$35,759.07. This calculator does not consider any of your own personal circumstances and we strongly suggest you seek budgeting advice prior to committing to any loan contract. Responsible lending criteria and lender terms and conditions will likely apply to any finalised loan contract. Proof of security and/or vehicle insurance may also be required before proceeding.

Generated 15 May 2024 19:12